



WIRETAP RIFF RECORDER

Ultra-Compact Riff Recorder Pedal with 8 Hours of Recording Time.
Syncable with the Free Wiretapp App Via Bluetooth for Songwriting
On The Go

User Manual



Table of Contents

Important Safety Instructions	3
Legal Disclaimer	3
Limited warranty	3
1. About this Manual	4
2. Introduction	4
2.1 Unpacking	4
2.2 True Bypass	4
2.3 Setting up	4
3. Operation – Inputs, Outputs and Controls	5
3.1 Power / Switching the effect on and off	5
3.2 Switching	5
3.3 Audio in and out	5
3.4 Effects controls	5
3.5 Connecting to Bluetooth	5
4. Operation – WireTap App / Bluetooth	6
4.1 WireTap App	6
4.2 Pairing your WireTap pedal and the WireTap App	6
4.3 Transferring riffs from your WireTap pedal to the App	7
5. Operation – Bypass Mode	7
5.1 True Bypass explained	7
6. Maintenance	8
6.1 Updating the firmware	8
7. Links	8
8. Technical Specifications	8

EN Important Safety Instructions

Terminals marked with this symbol carry electrical current of sufficient magnitude to constitute risk of electric shock.

Use only high-quality professional speaker cables with ¼" TS or twist-locking plugs pre-installed. All other installation or modification should be performed only by qualified personnel.



This symbol, wherever it appears, alerts you to the presence of uninsulated dangerous voltage inside the enclosure - voltage that may be sufficient to constitute a risk of shock.



This symbol, wherever it appears, alerts you to important operating and maintenance instructions in the accompanying literature. Please read the manual.

**Caution**

To reduce the risk of fire or electric shock, do not expose this appliance to rain and moisture. The apparatus shall not be exposed to dripping or splashing liquids and no objects filled with liquids, such as vases, shall be placed on the apparatus.

**Caution**

These service instructions are for use by qualified service personnel only.


To reduce the risk of electric shock do not perform any servicing other than that contained in the operation instructions. Repairs have to be performed by qualified service personnel.

1. Read these instructions.
2. Keep these instructions.
3. Heed all warnings.
4. Follow all instructions.
5. Do not use this apparatus near water.
6. Clean only with dry cloth.
7. Do not block any ventilation openings. Install in accordance with the manufacturer's instructions.
8. Do not install near any heat sources such as radiators, heat registers, stoves, or other apparatus (including amplifiers) that produce heat.

9. Use only attachments/accessories specified by the manufacturer.



injury from tip-over.

11. Unplug this apparatus during lightning storms or when unused for long periods of time.
 12. Refer all servicing to qualified service personnel. Servicing is required when the apparatus has been damaged in any way, such as power supply cord or plug is damaged, liquid has been spilled or objects have fallen into the apparatus, the apparatus has been exposed to rain or moisture, does not operate normally, or has been dropped.
 13. The apparatus shall be connected to a MAINS socket outlet with a protective earthing connection.
 14. Where the MAINS plug or an appliance coupler is used as the disconnect device, the disconnect device shall remain readily operable.
- 
15. Correct disposal of this product: This symbol indicates that this product must not be disposed of with household waste, according to the WEEE Directive (2012/19/EU) and your national law. This product should be taken to a collection center licensed for the recycling of waste electrical and electronic equipment (EEE). The mishandling of this type of waste could have a possible negative impact on the environment and human health due to potentially hazardous substances that are generally associated with EEE. At the same time, your cooperation in the correct disposal of this product will contribute to the efficient use of natural resources. For more information about where you can take your waste equipment for recycling, please contact your local city office, or your household waste collection service.
 16. Do not install in a confined space, such as a book case or similar unit.
 17. Do not place naked flame sources, such as lighted candles, on the apparatus.

10. Use only with the cart, stand, tripod, bracket, or table specified by the manufacturer, or sold with the apparatus. When a cart is used, use caution when moving the cart/apparatus combination to avoid

18. Please keep the environmental aspects of battery disposal in mind. Batteries must be disposed-of at a battery collection point.

19. Use this apparatus in tropical and/or moderate climates.

LEGAL DISCLAIMER

MUSIC Group accepts no liability for any loss which may be suffered by any person who relies either wholly or in part upon any description, photograph, or statement contained herein. Technical specifications, appearances and other information are subject to change without notice. All trademarks are the property of their respective owners. MIDAS, KLARK TEKNIK, LAB GRUPPEN, LAKE, TANNOY, TURBOSOUND, TC ELECTRONIC, TC HELICON, BEHRINGER, BUGERA and DDA are trademarks or registered trademarks of MUSIC Group IP Ltd. © MUSIC Group IP Ltd. 2016 All rights reserved.

LIMITED WARRANTY

For the applicable warranty terms and conditions and additional information regarding MUSIC Group's Limited Warranty, please see complete details online at music-group.com/warranty.

1. About this Manual

Thank you for spending your hard-earned money on this TC ELECTRONIC product! We have done our best to ensure that it will serve you for many years to come, and we hope that you will enjoy using it.

This manual will help you learn, understand and operate your TC ELECTRONIC product. This manual is available as a PDF download from the TC ELECTRONIC website.

Please read this manual in full, or you may miss important information.

Please do not operate your TC device before you have made all connections to external equipment as described in the "2.3 Setting up" section. In the subsequent sections of the manual, we assume that all connections are made correctly and that you are familiar with the previous sections.

We reserve the rights to change the contents of this manual at any time.

To download the most current version of this manual, view the product warranty, and access the growing FAQ database for this product, visit the web page

tcelectronic.com/support/

2. Introduction

WireTap Riff Recorder is the new must-have tool for every serious songwriter out there. With this ultra-compact pedal firmly secured to your pedalboard you'll never see yourself lose that killer riff or super-catchy melody ever again when inspiration strikes. Just hit record, jam on like you're used to, and begin building your majestic song catalogue right there on the spot in collaboration with the free WireTap app. McCartney had Lennon, Hetfield has Hammett, you have WireTap!

- Pedal-simple riff recorder - Capture ideas instantly when inspiration strikes
- Free WireTap App - Work on your songs on the go
- Record up to 8 hours of high-quality audio on the pedal

We guitarists tend to trust our own memory too much. We create that million-dollar riff, tell ourselves we'll remember it for later, and when we return... GONE! faster than Vanilla Ice's career. We take notes, use voice recording apps but nothing really sticks. There's simply too many steps and distractions from the moment of inspiration to when it's captured. With WireTap there's only one step, or rather one stomp. Press record and start playing, WireTap will take care of the rest right there on your pedalboard.

2.1 Unpacking

Your TC ELECTRONIC effect pedal box should contain the following items:

- Your TC ELECTRONIC effect pedal
- 1 TC ELECTRONIC sticker
- 1 leaflet about TC's guitar FX product range

Inspect all items for signs of transit damage. In the unlikely event of transit damage, inform the carrier and supplier.

If damage has occurred, keep all packaging, as it can be used as evidence of excessive handling force.

2.2 True Bypass

Here at TC, we have a simple philosophy: When you are using one of our products, you should hear something great – and if you don't, you shouldn't hear it at all. This is why this pedal sports True Bypass. When it is bypassed, it is really off and has zero influence on your tone, resulting in optimum clarity and zero loss of high end.

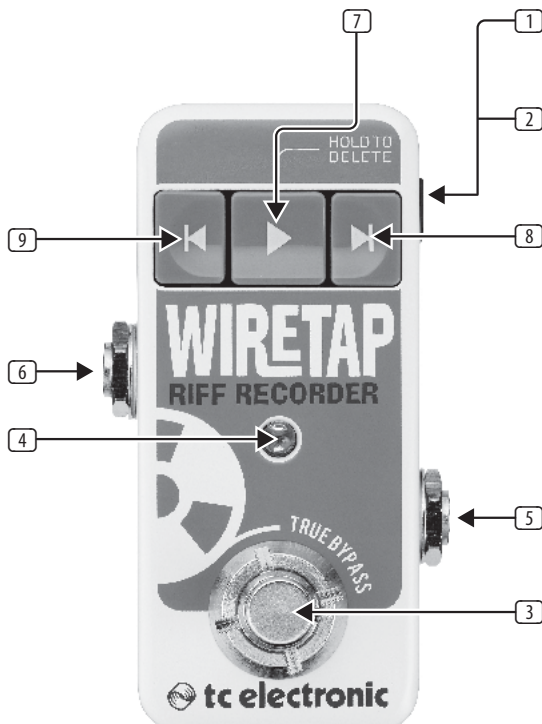
2.3 Setting up

Connect a 9 V power supply with the following symbol to the DC input socket of your TC ELECTRONIC effect pedal.

This product does not come with a power supply. We recommend using TC ELECTRONIC's PowerPlug 9 (sold separately).

- Plug the power supply into a power outlet.
- Connect your instrument to the in jack on the right side of the pedal using a ¼" jack cable.
- Connect the out jack on the left side of the pedal to your amplifier using a ¼" jack cable.

3. Operation – Inputs, Outputs and Controls



3.1 Power / Switching the effect on and off

- 1 POWER input** To power up your pedal, connect a power supply to its power input socket. The power input socket of your TC ELECTRONIC effect pedal is a standard 5.5/2.1 mm DC plug (centre = negative).

Your TC ELECTRONIC effect pedal requires a 9 V power supply providing 100 mA or more (not supplied). TC ELECTRONIC recommends using the PowerPlug 9.

To minimize hum, use a power supply with isolated outputs.

- 2 USB port** Use the standard Mini-B USB port on your TC ELECTRONIC effect pedal to connect your pedal to a computer. This will allow you to transfer riffs from the pedal to computer directly without using the app.

If there should be firmware updates for this pedal, they can also be installed using the USB port – see “6.1 Updating the firmware”.

3.2 Switching

- 3 FOOTSWITCH**

- To start recording a riff, tap the footswitch.
- To stop the recording and save the riff in the pedal, tap the footswitch again.

Tip: If you make a mistake while recording a riff, you can instantly delete the riff by pressing and holding the footswitch for 3 seconds.

- 4 INDICATOR LED** The LED lights up when the effect is switched on. The LED will also flash Red/Green alternately when WireTap is “discoverable” to Bluetooth* devices – see “3.5 Connecting to Bluetooth”.

3.3 Audio in and out

- 5 AUDIO INPUT (mono)** The audio input on the right side of this pedal is a standard ¼" jack (mono/TS). Connect your guitar to the audio input on the right side of your pedal using a regular ¼" mono cable.
- 6 AUDIO OUTPUT (mono)** The audio output on the left side of this pedal is a standard ¼" jack (mono/TS). Connect the audio output of your pedal to the next device in the signal chain using a regular ¼" mono cable.

3.4 Effects controls

- 7 PLAY / STOP button**

- To hear your last recorded riff press the play button.
- To stop playback, press play again.
- Holding down the play button for three seconds while a riff is playing will delete the riff.

- 8 FORWARD button**

- To skip to the next riff press the forward button.
- Wiretap will “blink” when you reach the last track in your list.

- 9 BACKWARD button**

- To skip to the previous riff press the backwards button.
- Wiretap will “blink” when your reached the first track in your list.

3.5 Connecting to Bluetooth

FORWARD + BACKWARD button

- Press the forward and backward buttons simultaneously to make WireTap “discoverable” to other Bluetooth devices.
- The INDICATOR LED will flash Red/Green alternately when WireTap is discoverable.

See “4.2 Pairing your WireTap pedal and the WireTap App” for more detailed information.

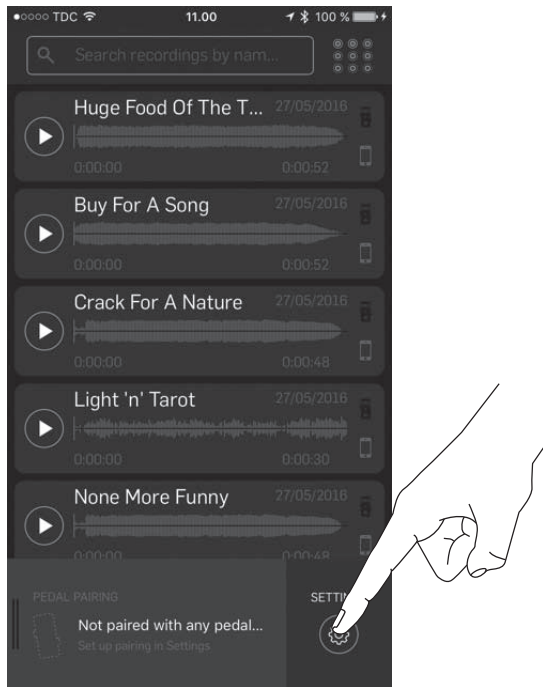
4. Operation – WireTap App / Bluetooth

4.1 WireTap App

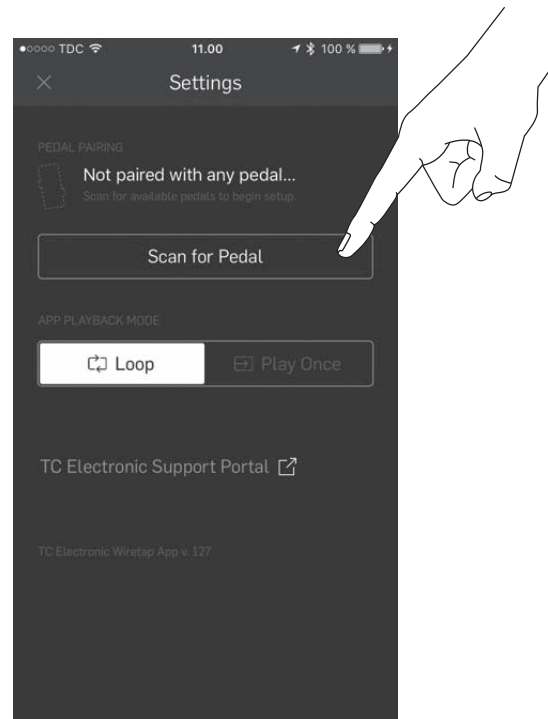
Becoming a great songwriter takes work and dedication, but that doesn't mean you can't work smarter to get to the good songs faster. The free WireTap app lets you do just that. When you've captured your ideas on the pedal, simply sync it up with the app via Bluetooth to transfer your riffs and sketches to your phone. You can also use the app as a high-quality standalone recorder for capturing quick ideas on the go. From there you can tag, name, group, trim and share your riffs in the app, giving you a structured and highly efficient workflow. The distance from rough riff to finished song of awesomeness has never been shorter.

4.2 Pairing your WireTap pedal and the WireTap App

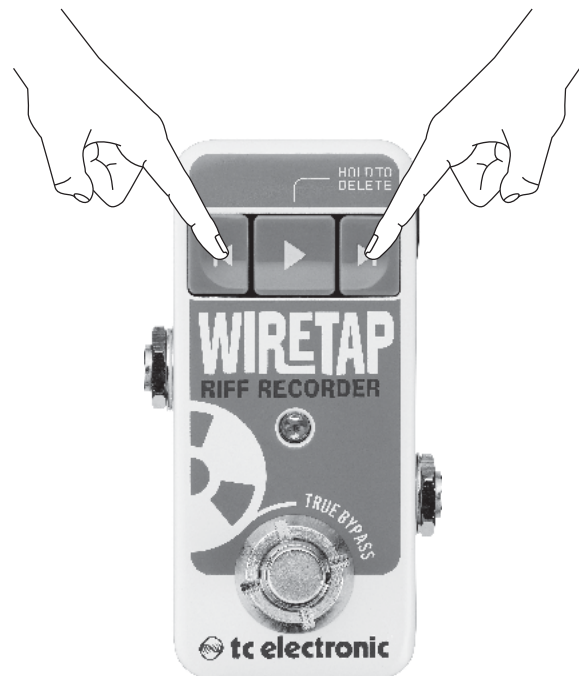
- Download the free WireTap app at www.tcelectronic.com/wiretap-riff-recorder.
- Make sure Bluetooth is enabled on your phone.
- Launch the WireTap app.
- Swipe the bottom bar to the left and click settings.



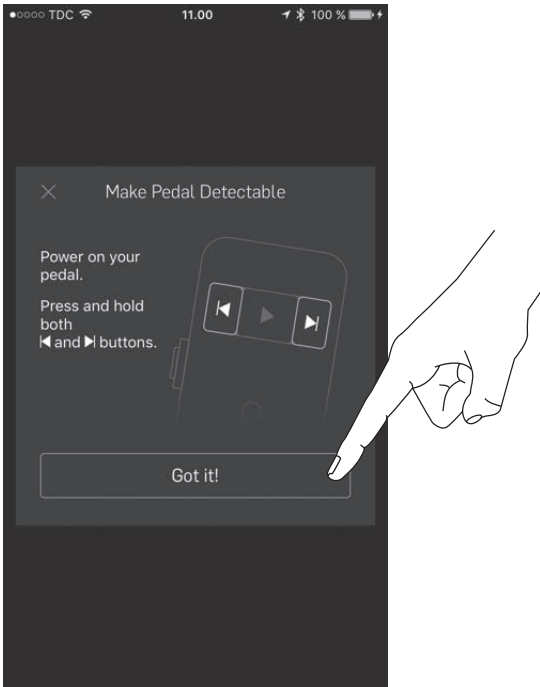
- Press "Scan for pedal".



- Press the FORWARD and BACKWARD buttons on your WireTap pedal simultaneously.



- Press the “Got it” button in the app.



- Choose the WireTap pedal listed in the menu.



Congratulations, your pedal and app should now be paired

4.3 Transferring riffs from your WireTap pedal to the App

- Find the riff you want to transfer.
- Swipe right to copy the riff from the pedal to the app.

5. Operation – Bypass Mode

EN

5.1 True Bypass explained

True Bypass mode is a hard-wire bypass that gives absolutely no coloration of tone when the pedal is bypassed. This is the default mode for your effect pedal.

Using True Bypass on all pedals is a perfect choice in setups with a few pedals and relatively short cables before and after the pedals.

6. Maintenance

6.1 Updating the firmware

TC may provide updates for the built-in software of your pedal, the firmware. Updating your TC pedal's firmware requires...

- a computer running Microsoft Windows* or OS X* with a standard USB interface
- the specified DC power supply for your pedal.

Preparing the firmware update

- Download the newest firmware from the "Support" page for your TC pedal. There are updaters for Microsoft Windows (these are ZIP archives containing the firmware installer) and for OS X (these are disk image files containing the firmware installer).
- Unplug all cables (including the power supply) from your TC pedal.
- Connect the pedal to your computer using a USB cable.
- Press and hold the footswitch on your TC pedal. If your TC pedal has more than one footswitch, press and hold the leftmost footswitch.
- Insert the DC power supply plug.
- The LED on your pedal should turn green. If your TC pedal has more than one LED, the leftmost LED should turn green. This indicates that the pedal is ready to receive the software update.
- Release the footswitch.

Applying the firmware update

- Quit all MIDI-related applications (e.g., your DAW) on your computer and launch the firmware updater you have downloaded in step 1.
- In the firmware updater app, select your TC pedal from the drop-down list under the "STEP 1" heading.
- When the "Update" button under the "STEP 2" heading turns green, click it.
- The updated firmware will now be transferred to your TC pedal. Wait for the progress bar to reach 100%. When the update procedure is complete, the pedal will automatically restart.

7. Links

Support resources

- TC ELECTRONIC Support: tcelectronic.com/support/
- TC ELECTRONIC – product software: tcelectronic.com/support/software/
- TC ELECTRONIC – all product manuals: tcelectronic.com/support/manuals/
- TC ELECTRONIC user forum: forum.tcelectronic.com/

TC ELECTRONIC on...

- the Web: tcelectronic.com/
- Facebook: facebook.com/tcelectronic
- Google Plus: plus.google.com/+tcelectronic/
- Twitter: twitter.com/tcelectronic
- YouTube: youtube.com/user/tcelectronic

8. Technical Specifications

Bypass mode	True Bypass
Input connector	1 x ¼" TS, unbalanced, mono
Input impedance	1 MΩ
Output connector	1 x ¼" TS, unbalanced, mono
Output impedance	100 Ω
Power input	Standard 9 V DC, centre negative, <100 mA
USB port	Mini USB connector for uploading riffs and software updates
Bluetooth wireless technology	
Frequency range	2402 MHz ~ 2480 MHz
Channel number	79
Version	Bluetooth 2.1 + EDR
Output	Bluetooth Classic 20 dBm
Compatibility	Supports SPP
Maximum	10 m (without interference) communication range
Connectivity	Master-slave
Dimensions (H x W x D)	92 x 43 x 50 mm (3.6 x 1.7 x 2.0")

FEDERAL COMMUNICATIONS COMMISSION COMPLIANCE INFORMATION



Responsible Party Name: **Music Group Services NV Inc.**

Address: **5270 Procyon Street
Las Vegas, NV 89118
USA**

Phone Number: **+1 702 800 8290**

WIRETAP RIFF RECORDER

complies with the FCC rules as mentioned in the following paragraph:

This equipment has been tested and found to comply with the limits for a Class B digital device, pursuant to part 15 of the FCC Rules. These limits are designed to provide reasonable protection against harmful interference in a residential installation. This equipment generates, uses and can radiate radio frequency energy and, if not installed and used in accordance with the instructions, may cause harmful interference to radio communications. However, there is no guarantee that interference will not occur in a particular installation. If this equipment does cause harmful interference to radio or television reception, which can be determined by turning the equipment off and on, the user is encouraged to try to correct the interference by one or more of the following measures:

- Reorient or relocate the receiving antenna.
- Increase the separation between the equipment and receiver.
- Connect the equipment into an outlet on a circuit different from that to which the receiver is connected.
- Consult the dealer or an experienced radio/TV technician for help.

This equipment complies with Part 15 of the FCC Rules. Operation is subject to the following two conditions:

- (1) This device may not cause harmful interference, and
- (2) This device must accept any interference received, including interference that may cause undesired operation.

This product conforms with essential requirements of the RED 2014/53/EU, the LV Directive 2014/35/EU, RoHS Directive 2011/65/EU and WEEE Directive - 2012/19/EU .

This transmitter must not be co-located or operating in conjunction with any other antenna or transmitter.

Caution!

The MUSIC Group is not responsible for any radio or TV interference caused by unauthorized modifications to this equipment. Such modifications could void the user authority to operate the equipment.

