

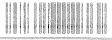


# SHOP FLC

Dealer: Fende  
 Contact:  
 Telephone: 31 104945634  
 Customer P.O.: 6648368  
 Requested Delivery: 05/10/2023  
 Date: 05/25/2023  
 Masterbuilder:

# LAVELER

Sales Order: 12865259-000022  
 Production Order: 103219145  
 Material: 9235001588  
 Qty: 1.000  
 Seq. Number: 71017



## GENERAL: B2 63 PBASS JRN - AOLW

|             |                  |            |               |                        |     |
|-------------|------------------|------------|---------------|------------------------|-----|
| BASE MODEL  | 59 P-BASS        | CS152100   | PLATING       | CHROME/NICKEL HARDWARE | CHR |
| FINISH TYPE | JOURNEYMAN       | JRN        | LEFT OR RIGHT | RIGHT HAND             | R   |
| CASE        | FCS P BASS BLACK | 0096233000 |               |                        |     |

**BODY:**

|                |                         |            |
|----------------|-------------------------|------------|
| BODYWOOD       | BASS ALDER 2 PC C/S 22" | 59470      |
| TOP            |                         |            |
| SORT           | YES SORT                | Y          |
| BODY SPREAD    |                         |            |
| BODY STYLE     | 59 P-BASS               | CS152100   |
| PICKUP ROUTE   |                         |            |
| NECK ROUTE     |                         |            |
| NECK P/U       | NONE                    | NONE       |
| MIDDLE P/U     | NONE                    | NONE       |
| BRIDGE P/U     | HW 62 P-BASS REL        | 0093803200 |
| CONTROL        |                         |            |
| ACCESSORY      | 59 P-BASS               | CS152100   |
| F-HOLE         |                         |            |
| NECK MTG.HOLES | 4 BOLT                  | 4 BOLT     |
| BRIDGE HOLES   |                         | 0019657200 |
| REAR ROUTE     |                         |            |
| BODY BINDING   |                         |            |
| CONTOURS       |                         |            |
| EDGE RADIUS    |                         |            |
| HEEL           |                         |            |
| SAND GRADE     |                         |            |
| BODY FINISH    | LAC                     |            |
| BODY FINISH    |                         |            |
| COLOR OPTION   | AGED                    | 3          |
| TOP COLOR      | OLYMPIC WHITE           | 05         |
| BOTTOM COLOR   |                         |            |

**NECK:**

|                    |                       |            |
|--------------------|-----------------------|------------|
| LIKE               | 59 P-BASS CC/REL      | 0058472981 |
| NECK FINISH        | MED_TINT NCL          |            |
| NECK FINISH        |                       |            |
| NECK BLANK         | QTR SAWN              | 0058238000 |
| REVERSE HEAD STOCK | ROUND LAM             | 04         |
| ROUND LAM OR SLAB  | ROUND LAM             | 04         |
| FRETBOARD WOOD     | BASS CITES RW AAA 9MM | 7711455000 |
| SORT F/DARK RW     | NO                    |            |
| TRUSS ROD          | BASS TOP LOAD         | 7719640000 |
| NO.OF FRETS        | 20                    | 20         |
| TUNING KEYS        | VINT BASS NICK REL RH | 0019467200 |
| MOUNTING STYLE     | 4 BOLT                | 4 BOLT     |
| HEAD STYLE         | PBASS - REG           | PBASS_REG  |
| HEAD SCOOP         | 60                    | 60         |
| HEAD THICKNESS     | 0.580"                | 580        |
| FRET WIRE          | MEDIUM JUMBO / 6150   | 7715109000 |
| FACEDOTS           | VINTAGE CLAY RLT      | 7721068000 |
| DOT SPACING        | WIDE                  | WIDE       |
| COMPOUND RADIUS    |                       |            |
| FRET BOARD RADIUS  | 7.25" RADIUS          | 7.25       |
| NUT WIDTH          | 1.750"                | 1.750      |
| BUTT WIDTH         | 2.500"                | 2.500      |
| NECK SHAPE         | 60 P-BASS OVAL "C"    | 07         |
| NECK SPEC 1ST      | .790"                 | 7901ST     |
| 12TH FRET          | .990"                 | 99012TH    |
| NECK BINDING       | NO                    | N          |
| NUT                | BONE                  | 0058911000 |
| SIDE DOTS          | VINTAGE CLAY          | 0094014000 |
| HEADSTOCK BINDING  | NO                    | N          |
| DECAL              | VINTAGE P BASS        | 0019492000 |

### BODY NOTES:

### NECK NOTES:

### HARDWARE:

|                |                        |            |
|----------------|------------------------|------------|
| BRIDGE         | P/J BASS RH/LH REL     | 0019657200 |
| BRIDGE PLATES  |                        |            |
| BRIDGE SADDLES |                        |            |
| OUTPUT         |                        |            |
| NECK PLATE     | V LOGO SN REL          | 0049415200 |
| BACK PLATE     | NONE                   | NONE       |
| REAR COVER     | NONE                   | NONE       |
| STRINGS        | 045-065-085-105        | STR25      |
| STRING TREE    |                        |            |
| STRAP LOCK     | NO STRAP LOCKS         | NONE       |
| TREM ARM       |                        |            |
| TREM ARM TIP   |                        |            |
| PICKGUARD      | PGA 64 P-BASS TORT REL | 7700540200 |

UNFIN NB REL  
 3RD STRAP BUTTON ON BACK OF HEADSTOCK

### HARDWARE & ELECTRONICS NOTES:

### ELECTRONICS:

|                 |                  |            |
|-----------------|------------------|------------|
| CONTROLS        | NONE             | NONE       |
| SELECTOR SWITCH |                  |            |
| SWITCH TIP      |                  |            |
| TONE KNOB       |                  |            |
| VOLUME KNOB     | NONE             | NONE       |
| POTS            |                  |            |
| NECK P/U        | NONE             | NONE       |
| MIDDLE P/U      | NONE             | NONE       |
| BRIDGE P/U      | HW 62 P-BASS REL | 0093803200 |

### NOTES:

2022 COLLECTION - TIME MACHINE

